

VILLA  
VELETA



CUMBRE DEL SOL







FINISHED AND FURNISHED PROPERTY. READY TO BECOME YOUR NEW HOME.





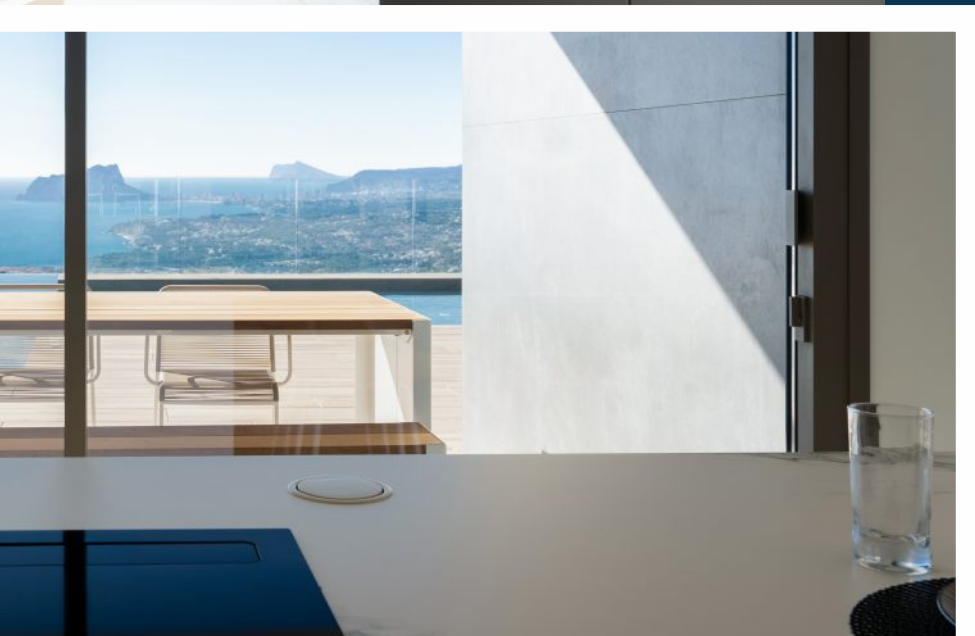




Villa Veleta, a new iconic villa in Residencial Jazmines. Its design from the 21st century blends in with the exclusive surroundings of Residential Resort Cumbre del Sol perfectly. It is built on a 1.168m<sup>2</sup> plot of land, where, as the villa faces the southwest you can see and enjoy amazing sunsets.

Everything about this villa shouts out quality and style, with an intelligent design that offers a practical distribution of the villa that optimises, even more, its exceptional views of the Mediterranean.

A home with many spaces to enjoy lounging around and family life in front of the sea. There are several rooms all connected with each other to be able to live different moments of the day in different settings. A dining room and living room, a kitchen with a central island where you could enjoy a perfect breakfast, and a large summer porch with a BBQ. All these rooms are laid out so you can enjoy good conversation, celebrate important family events or for you to just relax gazing at the sea.









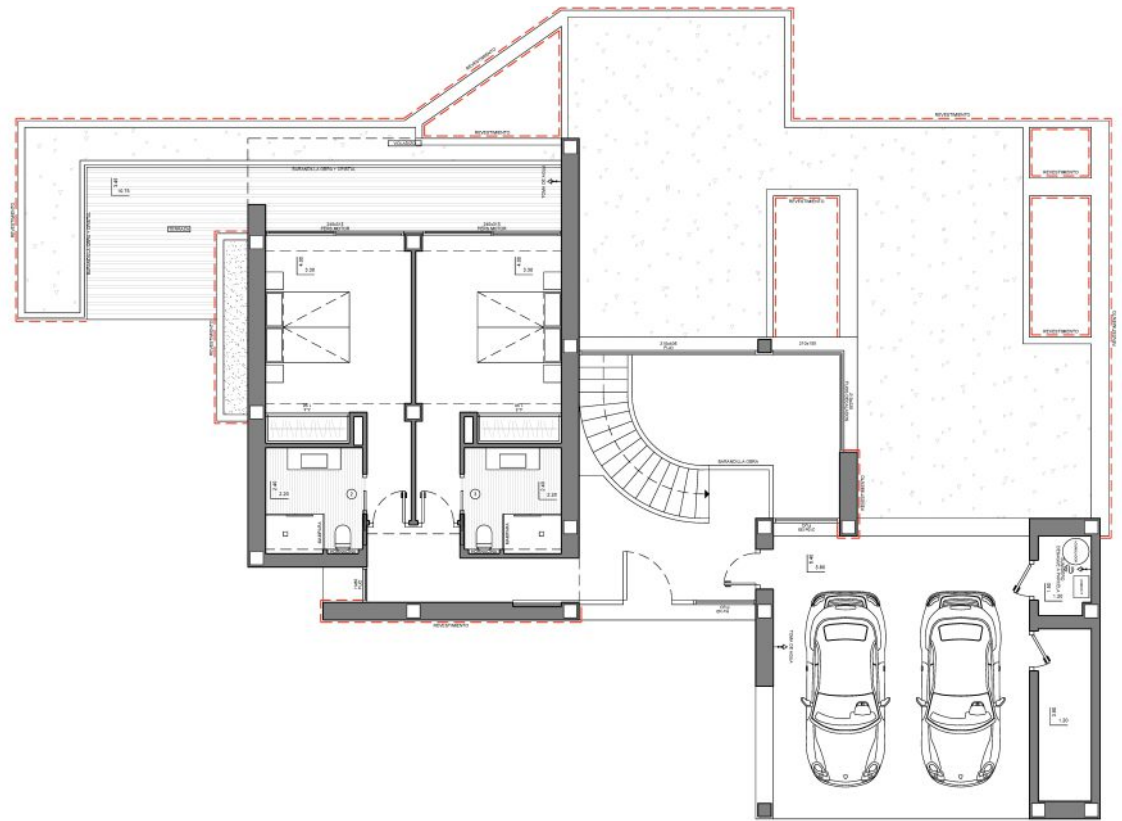




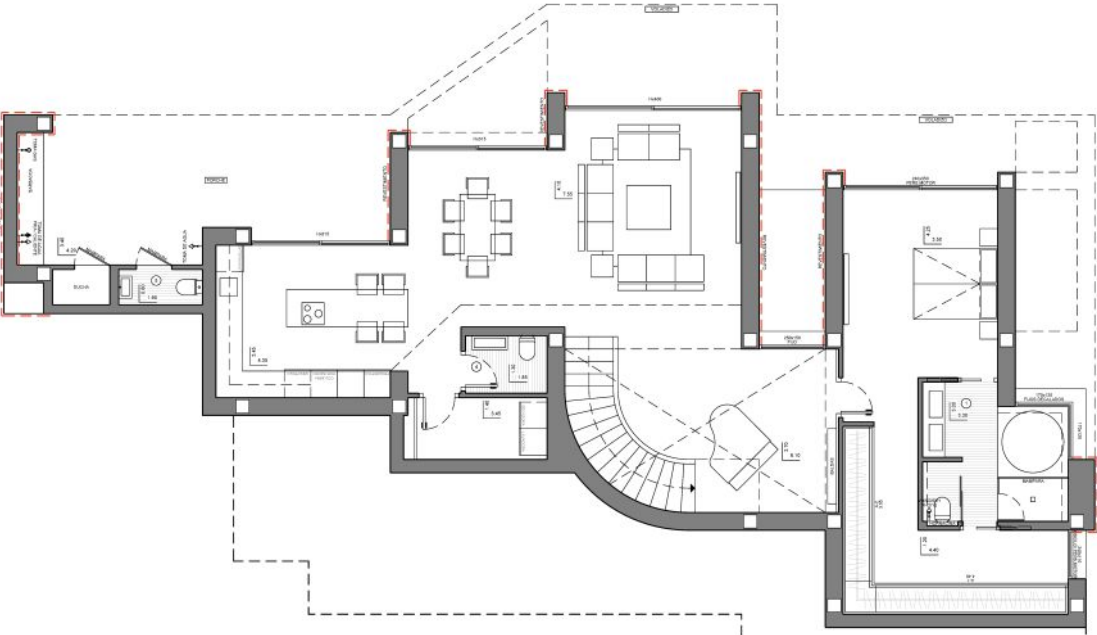


VILLA VELETA - PLANS

## UPPER FLOOR



# TOP FLOOR



# GROUND FLOOR



Every element of our homes has been designed to offer a luxurious living experience. From high-quality ceramic coverings to porcelain stoneware flooring in all areas, every detail reflects a commitment to excellence and good taste. Carefully selected according to a decoration project that prioritizes both aesthetics and functionality. The ceramics not only offer a flawless and modern appearance but also ensure durability and easy maintenance.



LUXURY EXPERIENCE  
IN EVERY DETAIL



## ENERGY EFFICIENCY CERTIFICATE A

Discover a residence distinguished by its Class A energy efficiency certification. Designed to maximise efficiency and minimise environmental impact.



## UNDERFLOOR HEATING

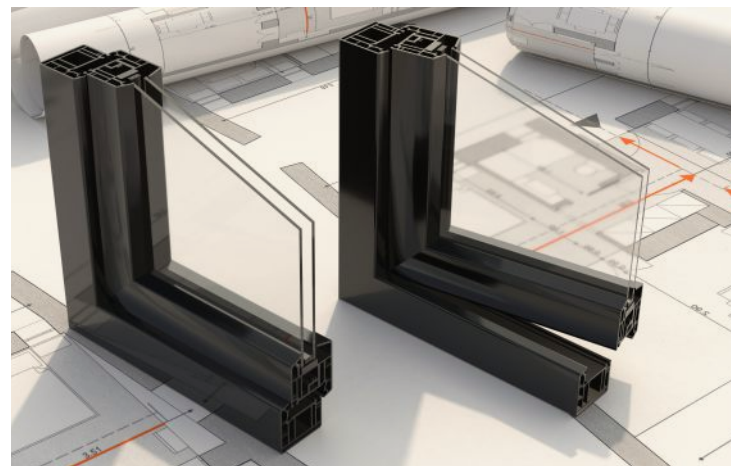
Experience the comfort of underfloor heating, a system that distributes heat evenly, creating a cosy atmosphere throughout the house.





## DOMOTICS

Our homes incorporate an advanced home automation system that allows you to manage household installations locally or remotely through various applications available for smartphones and tablets.



## STYLE AND EFFICIENCY IN EVERY VIEW

Tecnal windows are not only a display of style, they also contribute to exceptional thermal insulation, maintaining the perfect temperature in every room.

The main bedroom was designed thinking about comfort and relaxation. It is a private area with a large en suite bathroom with bath and shower facing the sea. It also has a large walk-in-closet and access to a private terrace.





UNIQUE DETAILS  
AND HIGH QUALITY FINISHES



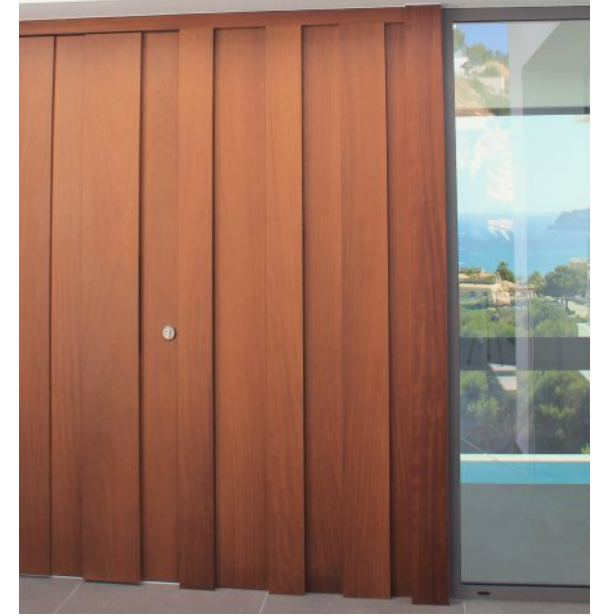
## LARGE FORMAT FLOOR

Experience the feeling of spaciousness with the impressive large format floor. Each space is visually transformed, creating a continuity that broadens the perception of each room. This detail not only elevates the design, but also immerses you in a unique experience where expansiveness is found at every turn.



## LED LIGHTING IN WARDROBES

Bring your wardrobe to life with integrated LED lighting. Every garment comes to life under a soft, bright light, turning your wardrobe into a clean, illuminated space. This addition is not only functional, but also visually elegant, adding a touch of luxury to your daily routines and turning your wardrobe into a space to admire.



## OVERHEAD DOORS

Overhead doors are not just entrances, but style statements. Each room is presented in a majestic way, providing a seamless connection between spaces and highlighting the height of the ceiling. This design not only adds sophistication, but also plays with light and spaciousness, creating unique and enveloping environments.

Equipped with an advanced home automation system that allows you to manage all household installations through various applications on your smartphone or tablet (iOS and Android), both locally and remotely via the internet. Additionally, we include two iPads for intuitive and efficient control of all home automation functions, ensuring you can manage your smart home with ease and convenience from anywhere.





## A unique destination: Residencial Cumbre del Sol

Discover an incomparable destination at Residencial Cumbre del Sol, located in Poble Nou de Benitatxell, between the towns of Teulada-Moraira and Jávea. This privileged location offers excellent transportation connections, being practically equidistant from the Valencia and Alicante airports, which doubles the availability of national and international flights at your disposal.

Cumbre del Sol is a place to enjoy every day of the year, with paradisiacal coves and beaches, a varied selection of restaurants, pharmacy, medical center, supermarket, beauty salon, equestrian facilities, tennis and paddle courts, all complemented by the proximity of the prestigious international Lady Elizabeth School. Live in an environment that combines natural beauty with all the amenities you need for a fulfilling and comfortable life.

# VILLA VELETA



✉ Avda. País Valencià, 22  
03720 Benissa (Alicante) - Spain

☎ 0034 900 123 323

@ vapf@vapf.com

🌐 www.vapf.com

📘 VAPFGroup

📷 vapf\_group

📺 VAPFGroup



## CUMBRE DEL SOL

2024- The company reserves the right to modify, without previous warning, the information contained in this catalogue. The pictures of this catalogue are only for guidance and have no contractual value for the company. The final plans and finishing details of each property will be subject to the clauses contained in the corresponding contract. In addition, these images correspond to specific projects, so that a change of location to other plots will implicate modifications. The Spanish version prevails. The information contained in this catalogue is valid on the date of issue.