

VILLA
HC010



BLANC
ALTEA HOMES

 **VAPF**
CREATING HOMES SINCE 1963



HC010 - GALLERY

PRIME LOCATION IN ALTEA

BREATHTAKING SEA VIEWS

Located in Blanc Altea Homes, a gated residential area situated in a natural setting that offers privacy and exclusivity. Enjoy panoramic sea views, the Altea Bay, and the Benidorm skyline.

The development is already 99% complete, with just one property still under construction, due for completion by mid-2025. After that, there will be no further construction in the surrounding area.



GATED RESIDENTIAL AREA



SECURITY CAMERAS

MAILBOX AREA





GARDENED COMMON AREAS WITH WIDE
AND LIGHTENED ACCESS ROAD

PRIVATE RESIDENTIAL AREA

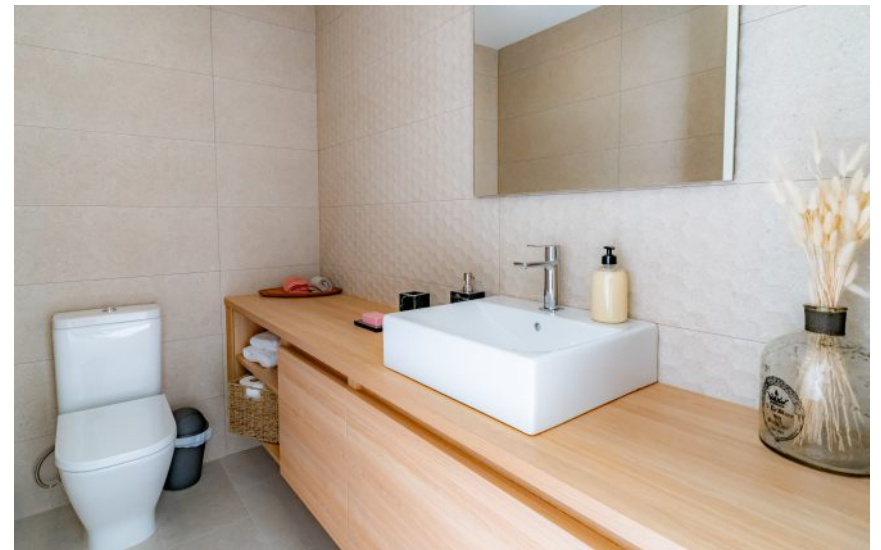






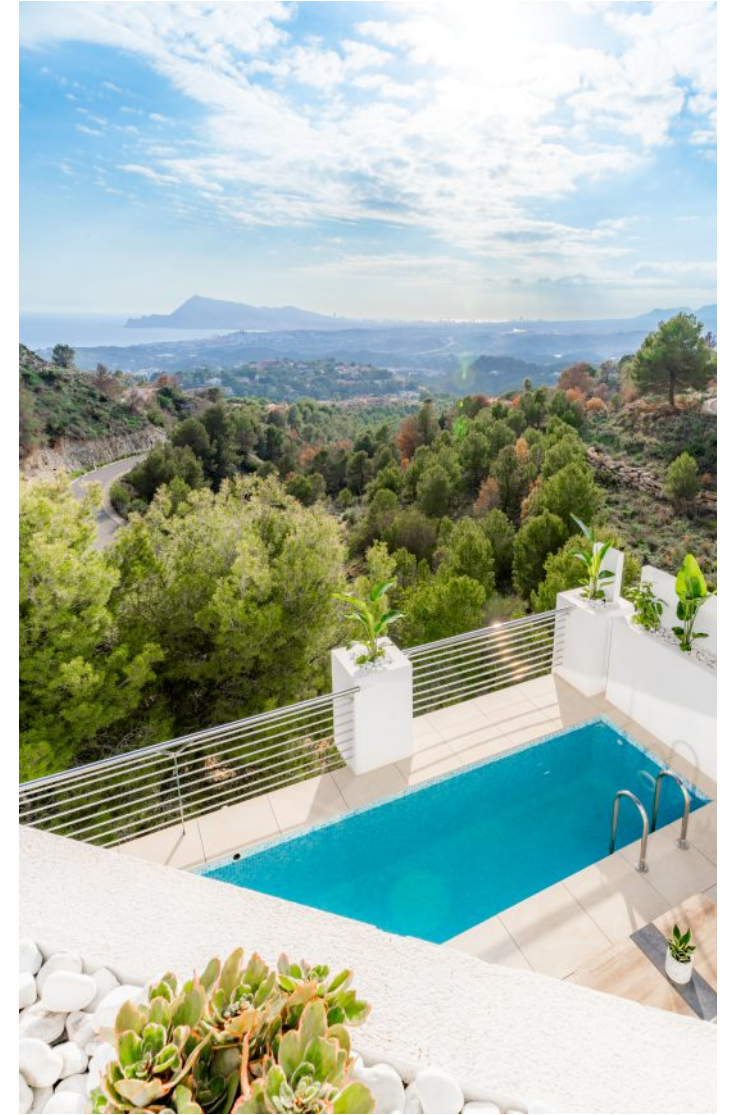
Blanc Altea Homes: A triplex with 4 bedrooms, each with an en-suite bathroom and fitted wardrobes, a guest toilet, garage, spacious living-dining room, fully equipped kitchen with an island open to the dining area, terrace with swimming pool, summer dining area, and barbecue.

A property with plenty of natural light, sea views, and a very cosy decor.





LAST PROPERTY FOR SALE. KEY READY



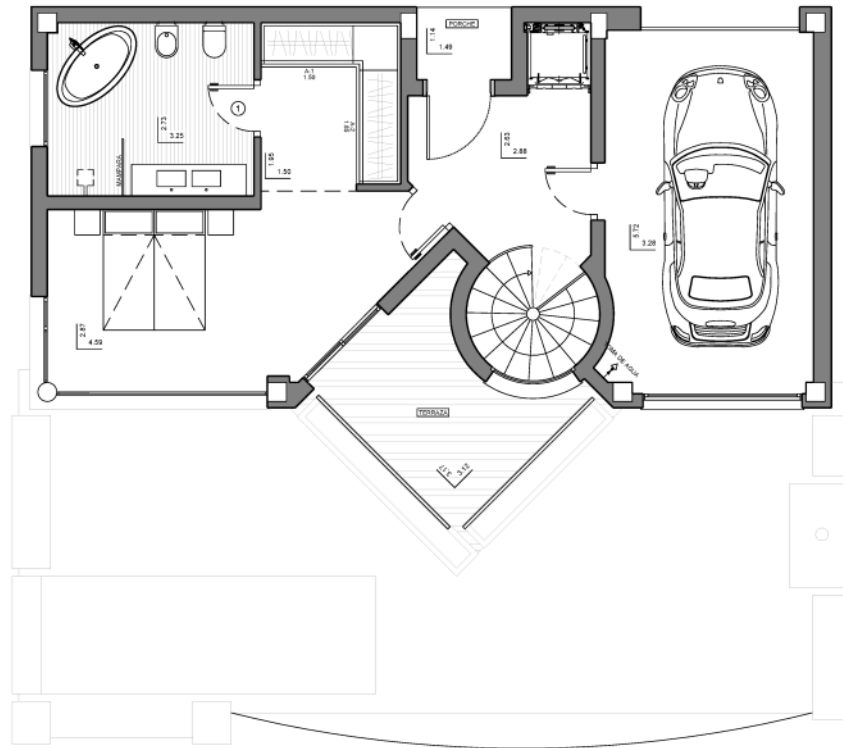




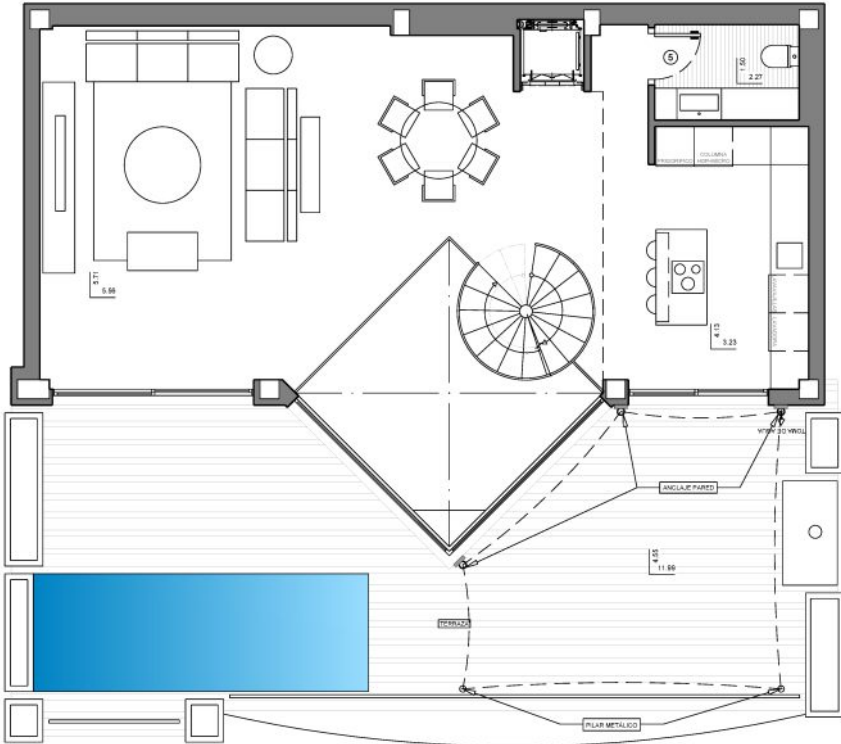




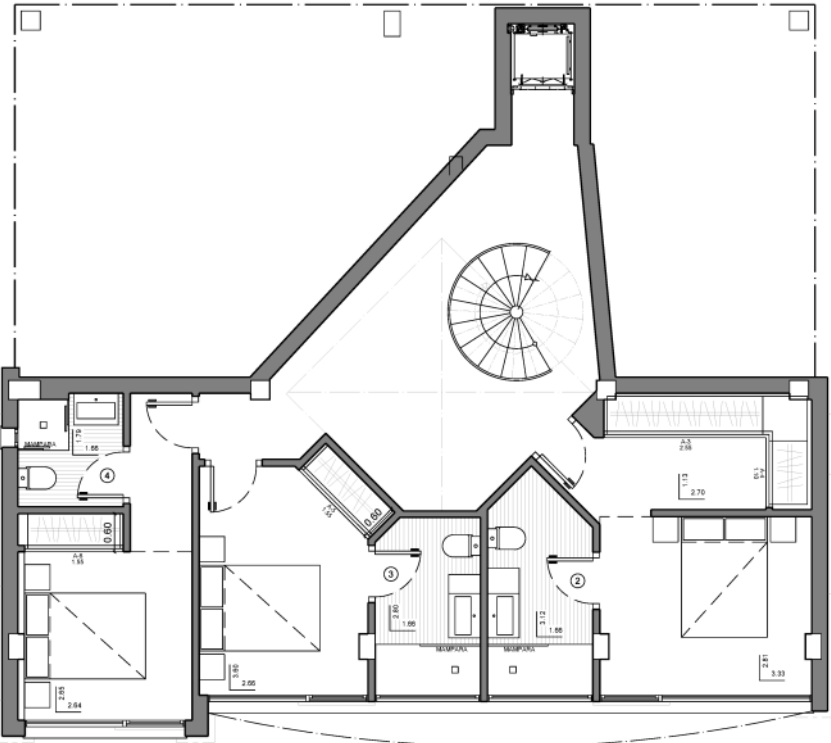
GROUND FLOOR



FLOOR -1



FLOOR -2



This property is equipped with a SCHINDLER elevator, designed to simplify your daily life.





TERRACE

With a private pool, barbecue area, and a shaded zone where the outdoor dining area is located.



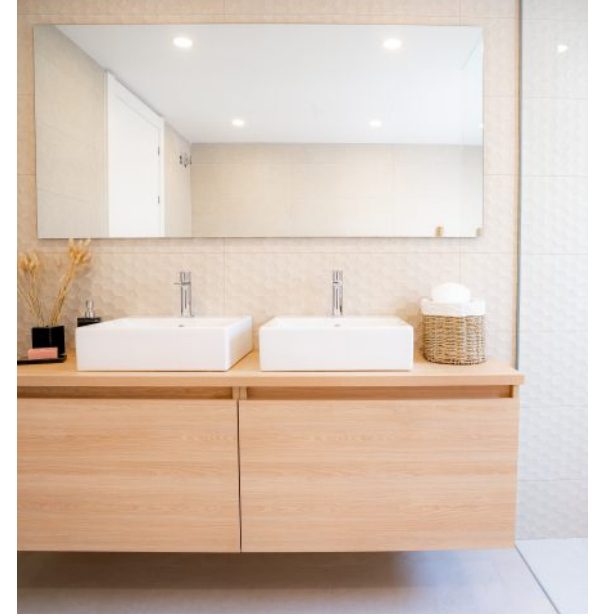
BUILT-IN WARDROBES

Wardrobe modules equipped with drawers, shelves, and hanging rail, finished with a linen-effect Cancun plastic laminate.



FLOORING

Porcelain stoneware flooring inside the property, with the same model used for the exterior, laid over plots.



BATHROOMS

The 4 bathrooms and the guest toilet of Blanc-10 are fully equipped with sanitary fixtures, countertops, taps, mirrors, and shower screens.



KITCHEN

Open-plan kitchen with a central island featuring cooking and breakfast areas, fully equipped with Bosch appliances (fridge, induction hob, oven, microwave, extractor fan, dishwasher, and washing machine).



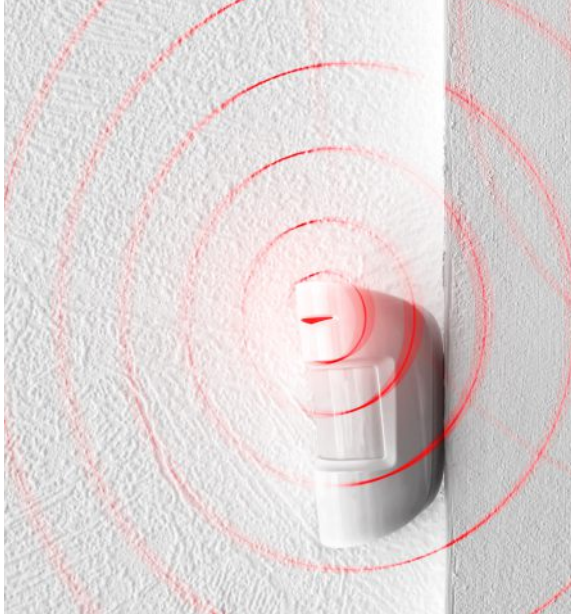
AEROTHERMAL SYSTEM

Simultaneous heating and hot water production system by ECODAM HYBRID from MITSUBISHI ELECTRIC®, based on an exterior heat pump with high energy efficiency, providing heating in winter, air conditioning in both summer and winter, and hot water throughout the year.



HEATING

Pre-installation of radiator heating in all rooms, connected to the ECODAM HYBRID system by MITSUBISHI ELECTRIC®.



ALARM SYSTEM

Wireless alarm with video verification, VISIONIC PowerMaster kit or similar, consisting of an alarm control panel, control keypad, remote control, 2 infrared detectors, and 1 detector with a camera.



LIGHTING

Includes all lighting fixtures in the property, including those on the porch and terrace.



BLINDS

Electric blinds throughout the property.

CLOSED GARAGE





Living in Altea, surrounded by the sea and the mountains, in a town that maintains the essential Mediterranean character shown in its picturesque beaches, as well as its old town streets that give a sense of calmness in the warm and welcoming character of its residents.

Altea is a real paradise, a place to live. Enjoy the sea, its gastronomy, the culture and its art. Where you can appreciate a landscape of white houses full of colourful flowers, the blue and white of the internationally famous dome and its natural surroundings with endless walking routes for nature lovers and its unique coves and beaches with turquoise blue water.

VILLA HC010



✉ Avda. País Valencià, 22
03720 Benissa (Alicante) - Spain

☎ 0034 900 123 323

@ vapf@vapf.com

🌐 www.vapf.com

📘 VAPFGroup

📷 vapf_group

📺 VAPFGroup



**BLANC
ALTEA HOMES**

2024- The company reserves the right to modify , without previous warning the information contained in this catalogue. The pictures of this catalogue are only for guidance and have no contractual value for the company. The final plans and finishing details of each property will be subject to the clauses contained in the corresponding contract. In addition, these images correspond to specific projects, so that a change of location to other plots will implicate modifications. The Spanish version prevails. The information contained in this catalogue is valid on the date of issue.